

NOTE:

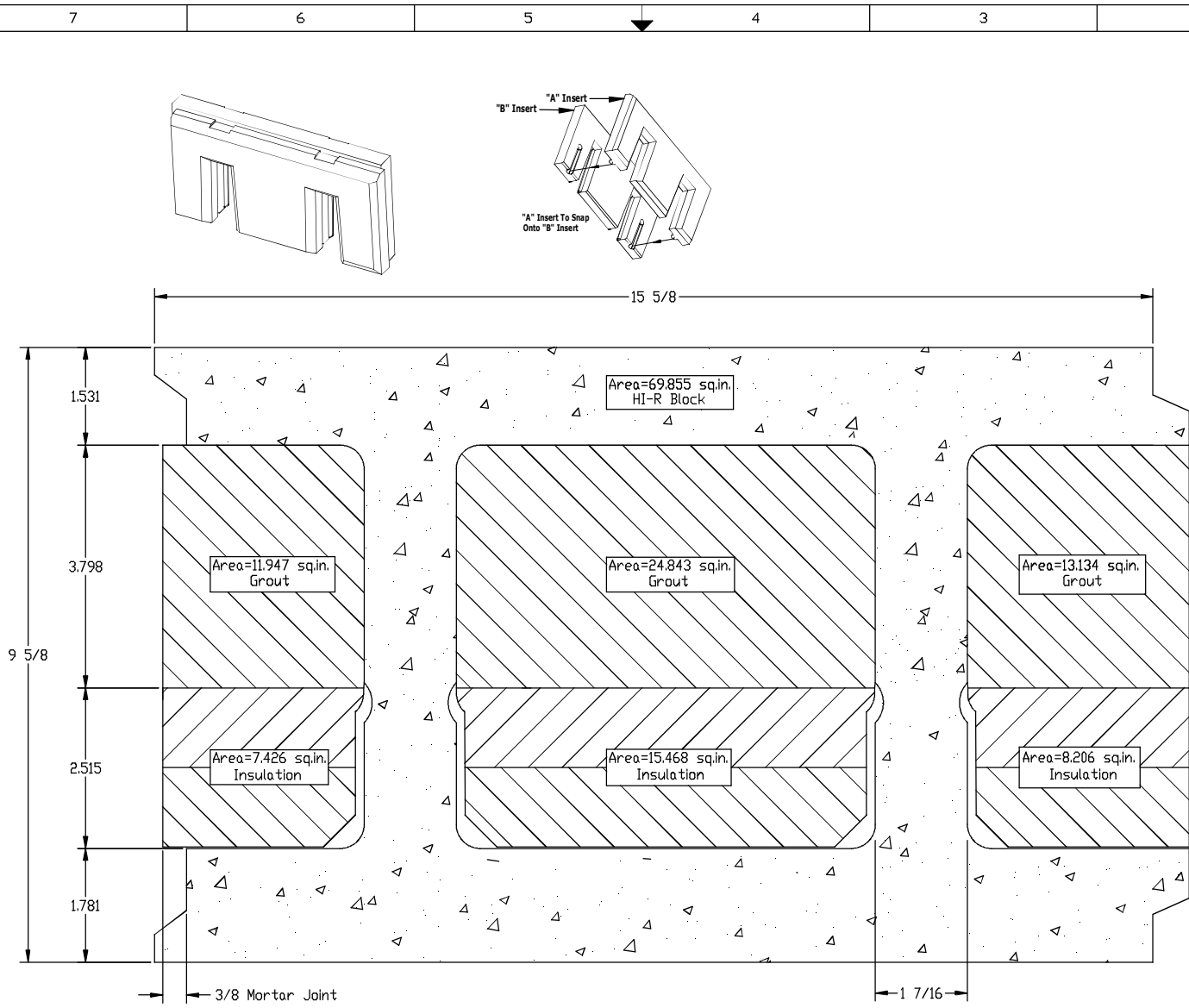
1. 8" HI-R Block Dimensions per CBIS Dwg. No. 08-0017 Rev:C1
2. View Shown at Half High Level
3. 1 3/4" Outer & 1 1/4" Inner Face Shells

GRYCEL 4/18/12

CBIS/KORFIL

P.O. BOX 1000
 Freight House Road
 West Brookfield, Ma. 01585
 www.CBISINC.com





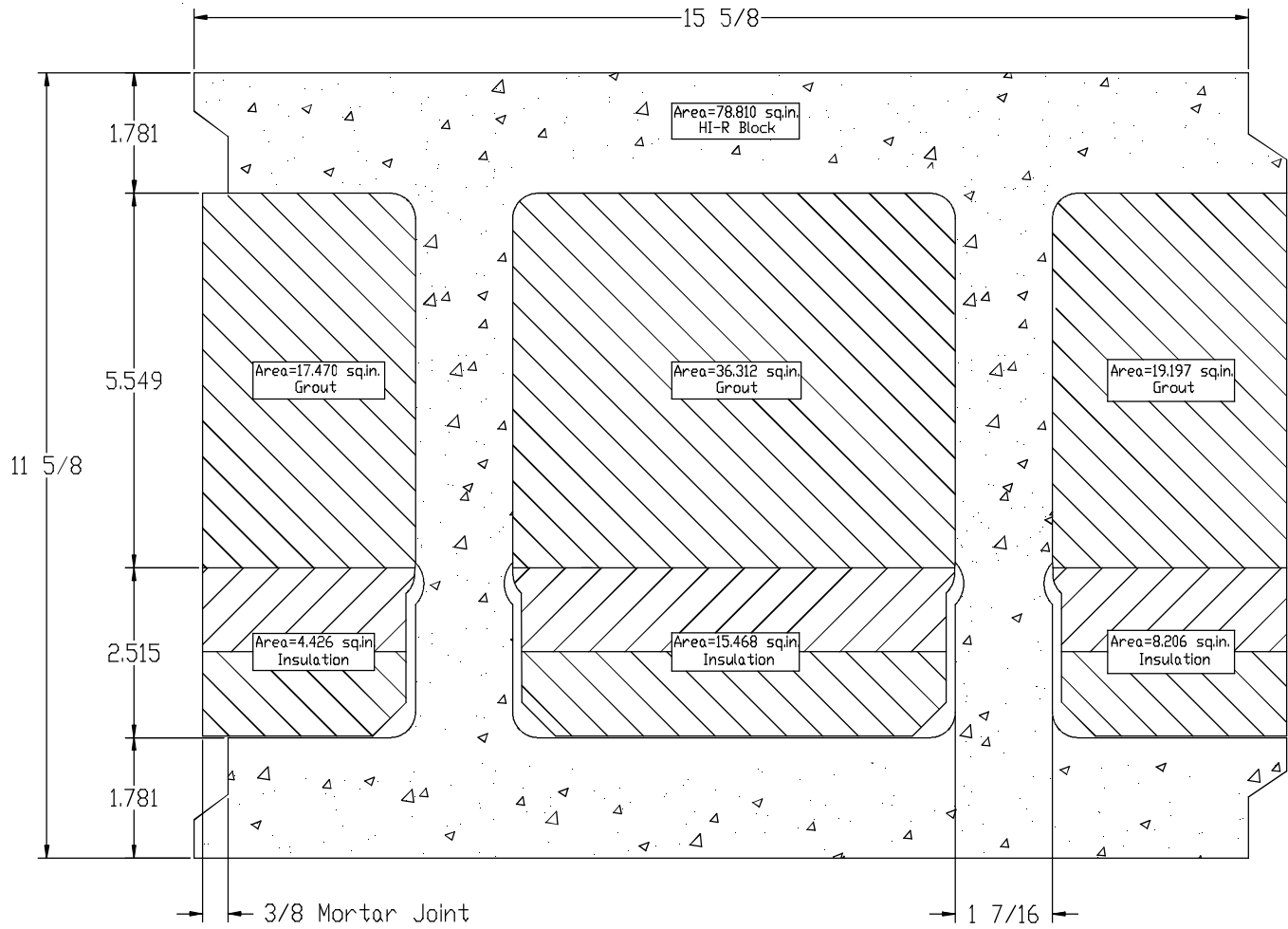
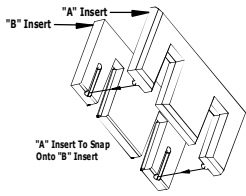
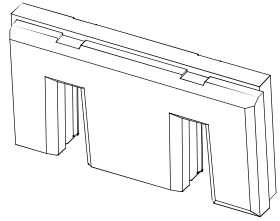
NOTE:

1. 10" HI-R Block Dimensions per CBIS Dwg. No. 08-0018 Rev:B1
2. View Shown at Half High Level
3. 1 3/4" Outer & 1 1/2" Inner Face Shells

GRYCEL 4/18/2012

CBIS/KORFIL
 P.O. BOX 1000
 Freight House Road
 West Brookfield, Ma. 01585
 www.CBISINC.com





NOTE:

1. 12" HI-R Block Dimensions per CBIS Dwg. No. 08-0019 Rev:A1
2. View Shown at Half High Level
3. 1 3/4 Outer and Inner Face Shells

GRYCEL 4/18/2012

CBIS/KORFIL
 P.O. BOX 1000
 Freight House Road
 West Brookfield, Ma. 01585
 www.CBISINC.com

