

# **CBIS/Korfil**

## **HI-R Drawing Details**

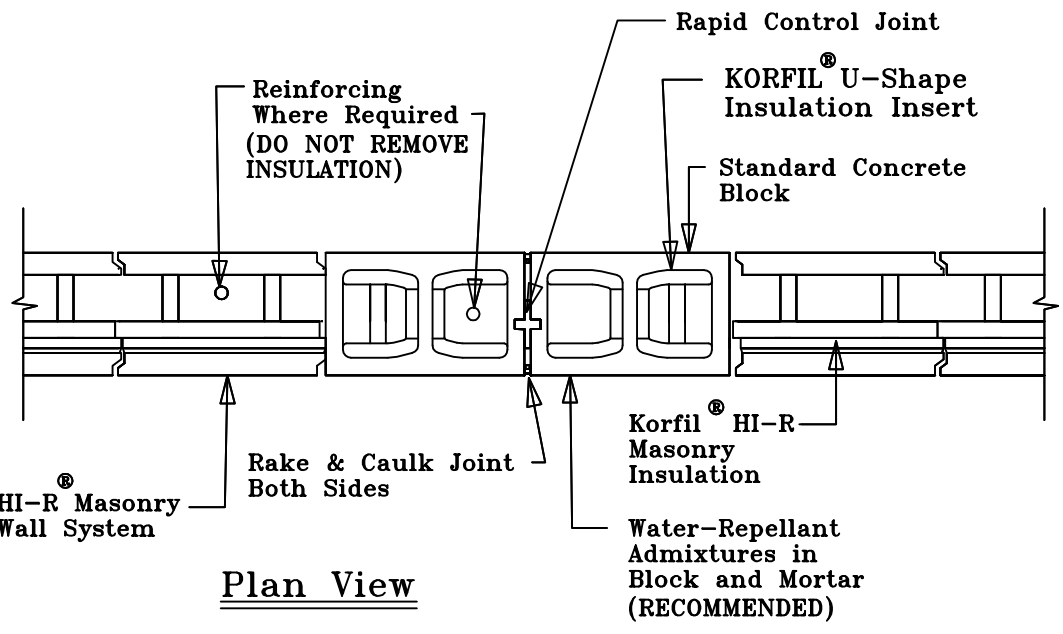
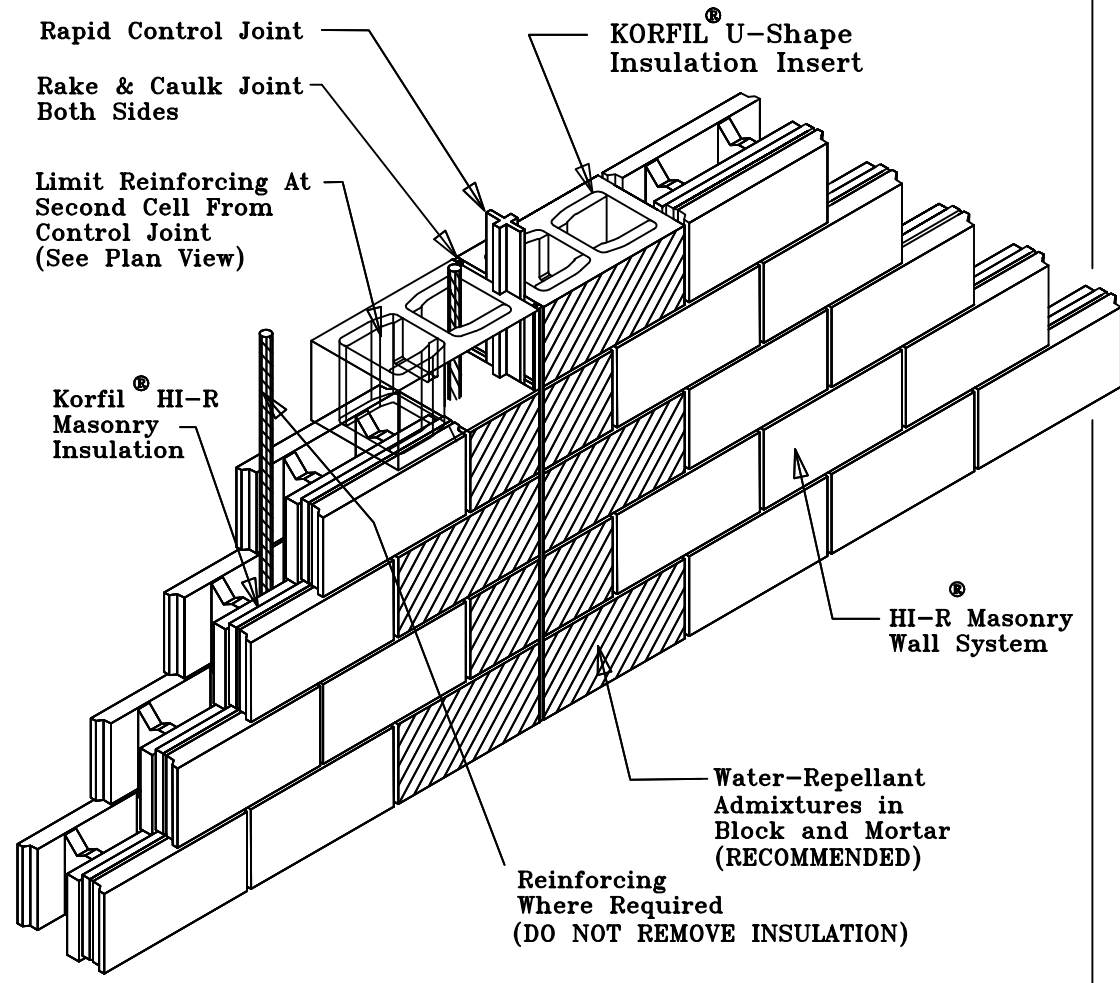
### **Table Of Contents**

#### **HI-R Drawing Number**

- 1. 8", 10", & 12" Rapid Control Joint**
- 2. 8", 10", & 12" Control Joint**
- 3. 8" Standard Corner**
- 4. 10" & 12" Reinforced Corner**
- 5. 8", 10", & 12" Standard Door Jamb**
- 6. 8", 10", & 12" Standard Window Jamb**
- 7. 8" Thru Wall Base**
- 8. 10" Thru Wall Base**
- 9. 12" Thru Wall Base**
- 10. 8" Window Head Thru Flashing**
- 11. 10" Window Head Thru Flashing**
- 12. 12" Window Head Thru Flashing**
- 14. 8" Thru Wall Base (Alt.)**
- 15. 8" Window Head Thru Flashing (Alt.)**
- 16. 8", 10", & 12" Optional Door Jamb**
- 17. 8", 10", & 12" Optional Window Jamb**
- 18. 12" Alternate Corner**
- 19. 8", 10", & 12" Mortar Joint Wire Reinforcement**

# HI-R<sup>®</sup> WALL SYSTEM

## 8", 10" & 12" Rapid Control Joint Detail



Plan View

DETAILS

1/22/10 HI-R 1

**NOTICE:** This Detail is for the Discretionary Use of the Architect. CBIS Assumes No Responsibility For Any Misuse Or Misrepresentation of the Product Or This Detail.

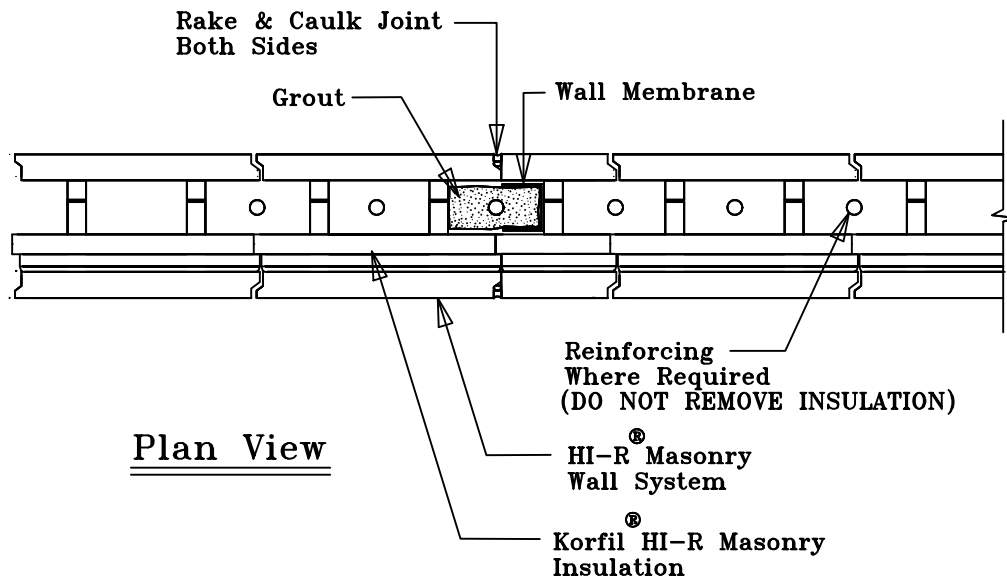
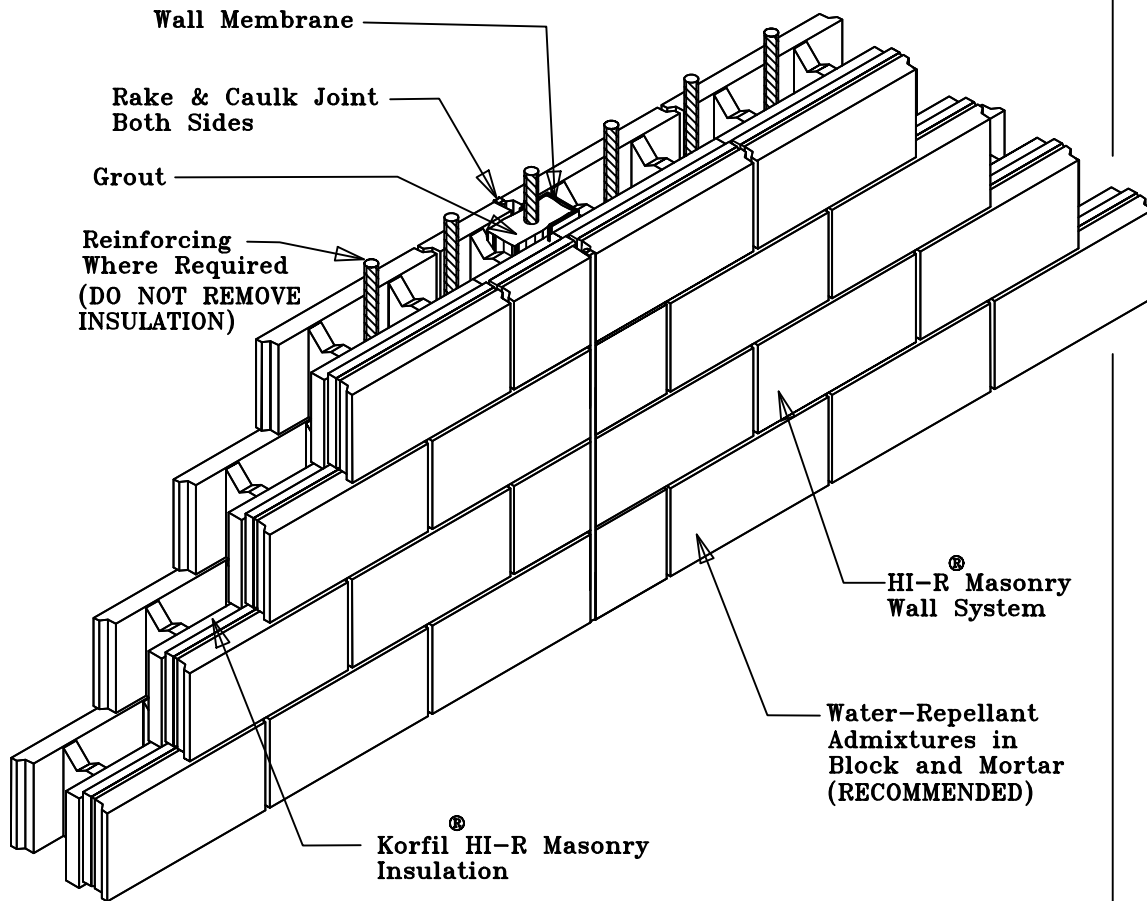
Concrete Block Insulating Systems  
 P.O. Box 1000  
 Freight House Road  
 West Brookfield, MA 01585  
[www.cbisinc.com](http://www.cbisinc.com)



# HI-R<sup>®</sup> WALL SYSTEM

## 8", 10", & 12" Control Joint Detail

DETAILS



Plan View

6/1/01 HI-R 2

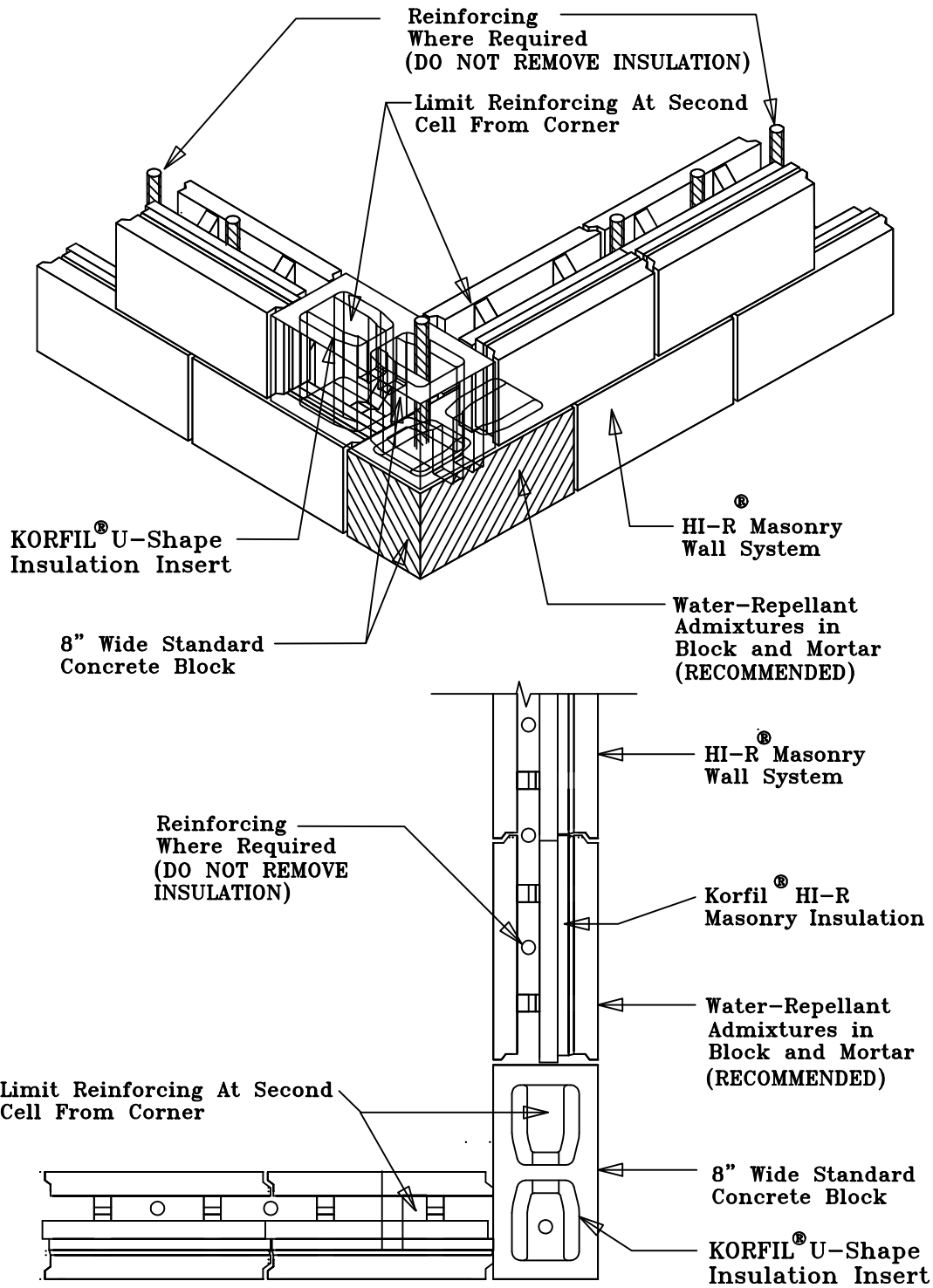


**NOTICE:** This Detail is for the Discretionary Use of the Architect. CBIS Assumes No Responsibility For Any Misuse Or Misrepresentation of the Product Or This Detail.

Concrete Block Insulating Systems  
 P.O. Box 1000  
 Freight House Road  
 West Brookfield, MA 01585  
[www.cbisinc.com](http://www.cbisinc.com)

# HI-R<sup>®</sup> WALL SYSTEM

## 8" Standard Corner Detail



Plan View

DETAILS

1/22/10 HI-R 3

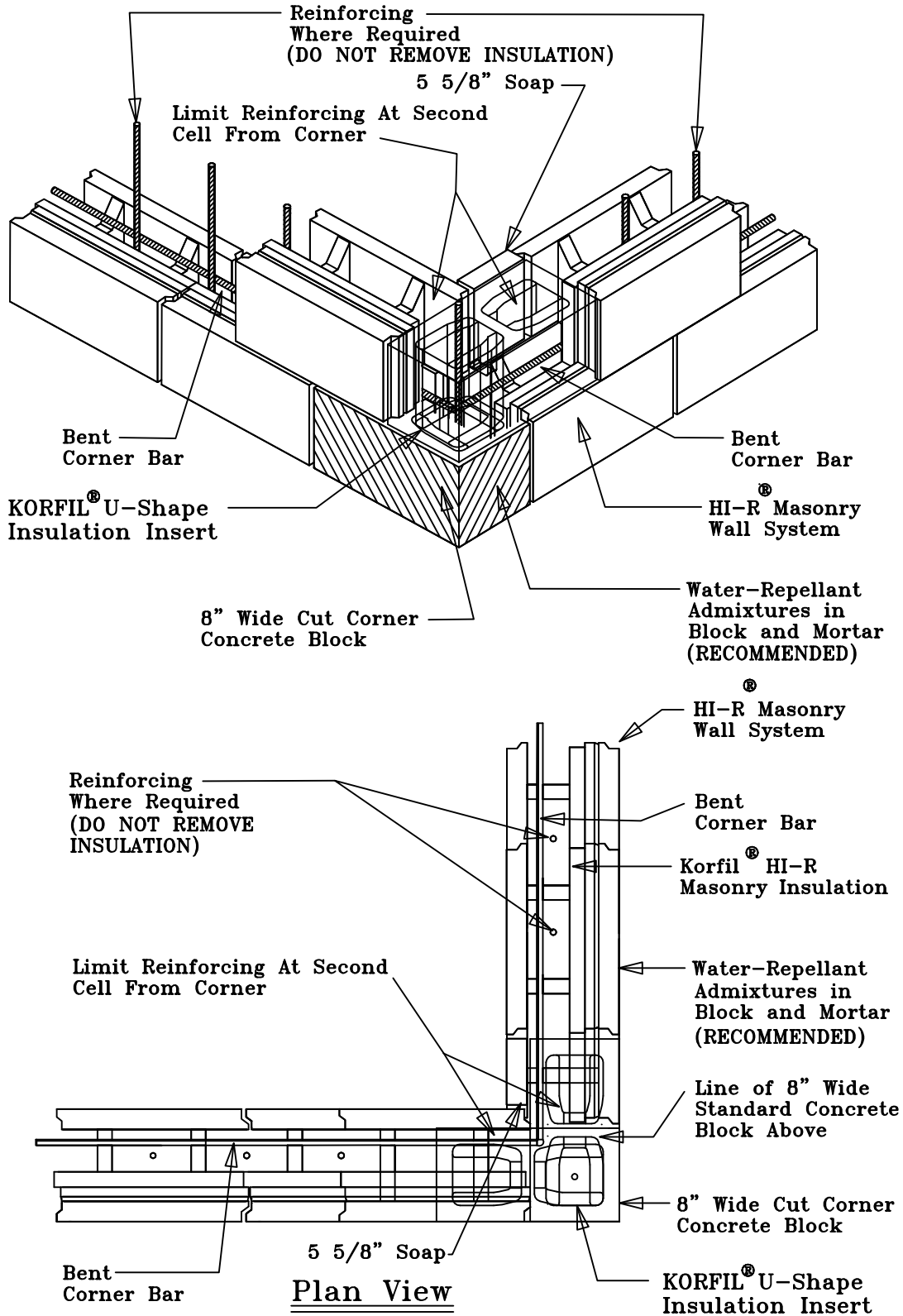
**NOTICE:** This Detail is for the Discretionary Use of the Architect. CBIS Assumes No Responsibility For Any Misuse Or Misrepresentation of the Product Or This Detail.

Concrete Block Insulating Systems  
 P.O. Box 1000  
 Freight House Road  
 West Brookfield, MA 01585  
 www.cbisinc.com



# HI-R<sup>®</sup> WALL SYSTEM

## 10" & 12" Reinforced Corner Detail



DETAILS

1/22/10 HI-R 4

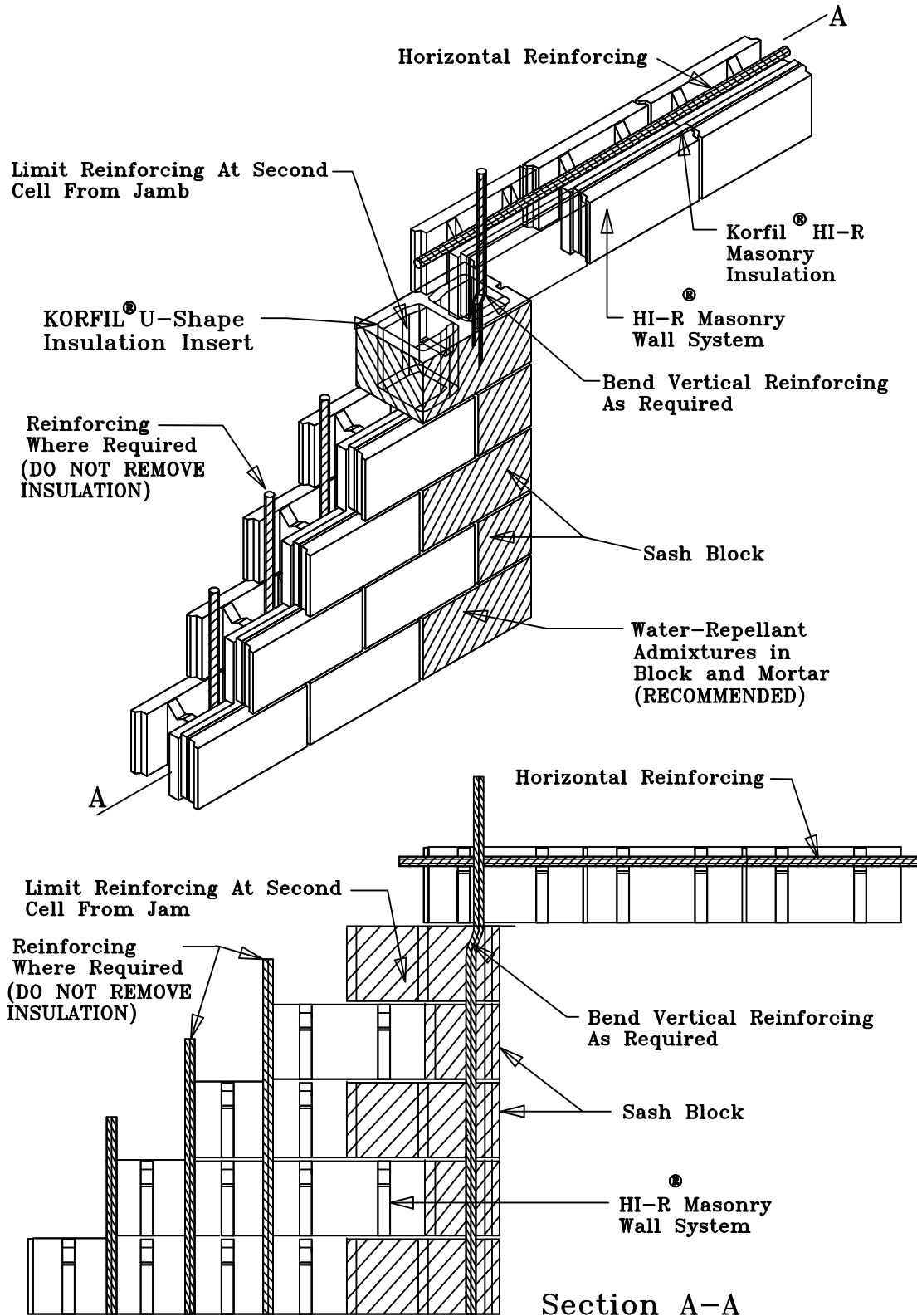
**NOTICE:** This Detail is for the Discretionary Use of the Architect. CBIS Assumes No Responsibility For Any Misuse Or Misrepresentation of the Product Or This Detail.

Concrete Block Insulating Systems  
 P.O. Box 1000  
 Freight House Road  
 West Brookfield, MA 01585  
 www.cbisinc.com



# HI-R<sup>®</sup> WALL SYSTEM

## 8", 10" & 12" Standard Door Jamb Detail



DETAILS

1/22/10 HI-R 5

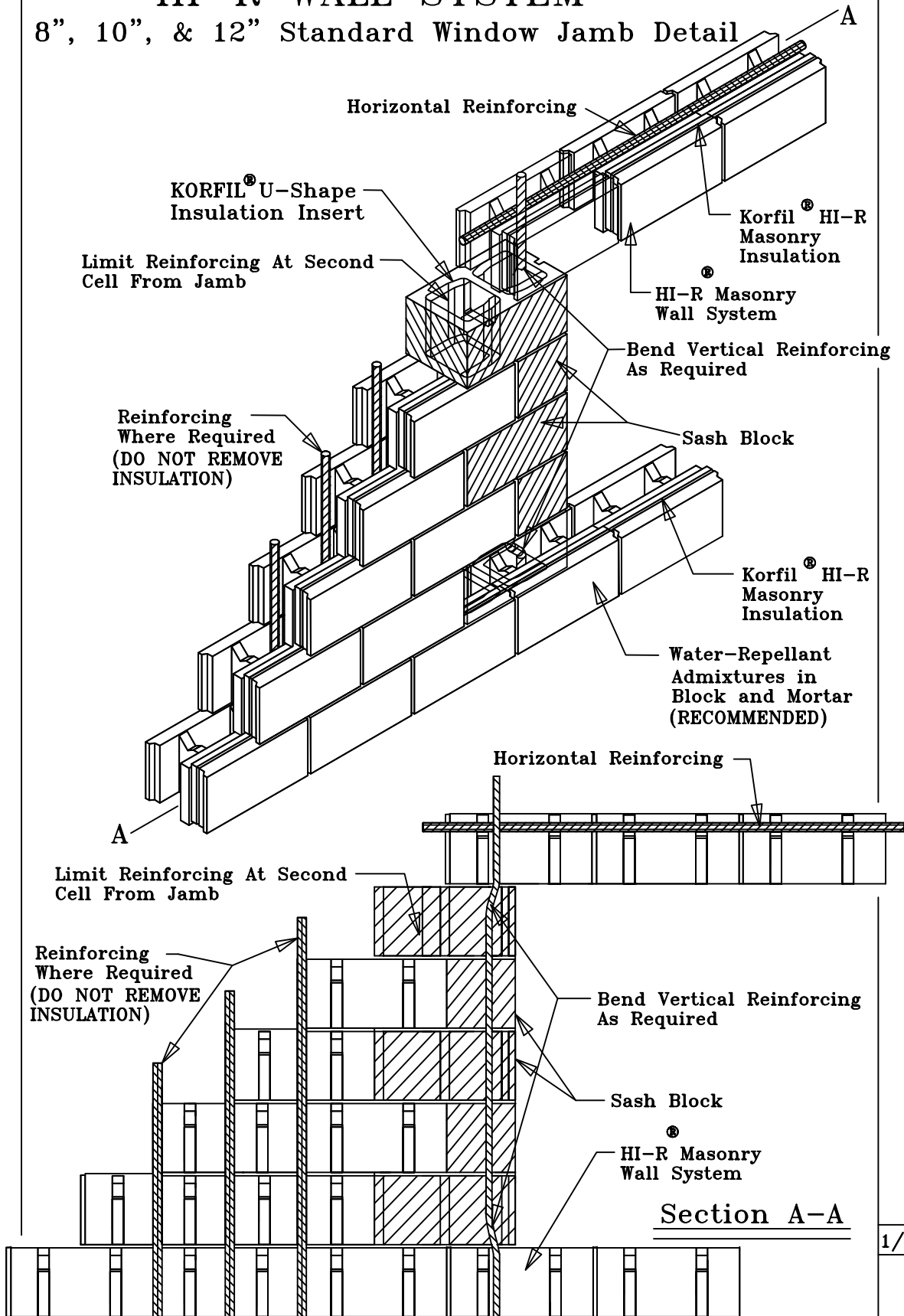
**NOTICE:** This Detail is for the Discretionary Use of the Architect. CBIS Assumes No Responsibility For Any Misuse Or Misrepresentation of the Product Or This Detail.

Concrete Block Insulating Systems  
 P.O. Box 1000  
 Freight House Road  
 West Brookfield, MA 01585  
 www.cbisinc.com



# HI-R<sup>®</sup> WALL SYSTEM

## 8", 10", & 12" Standard Window Jamb Detail



DETAILS

1/22/10 HI-R 6

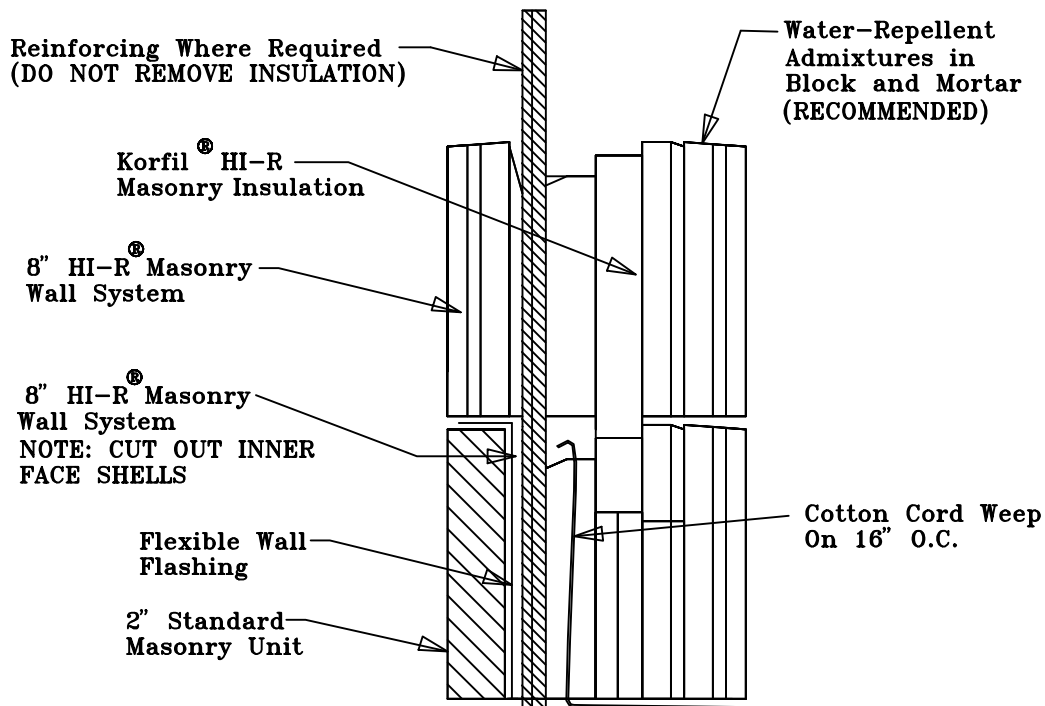
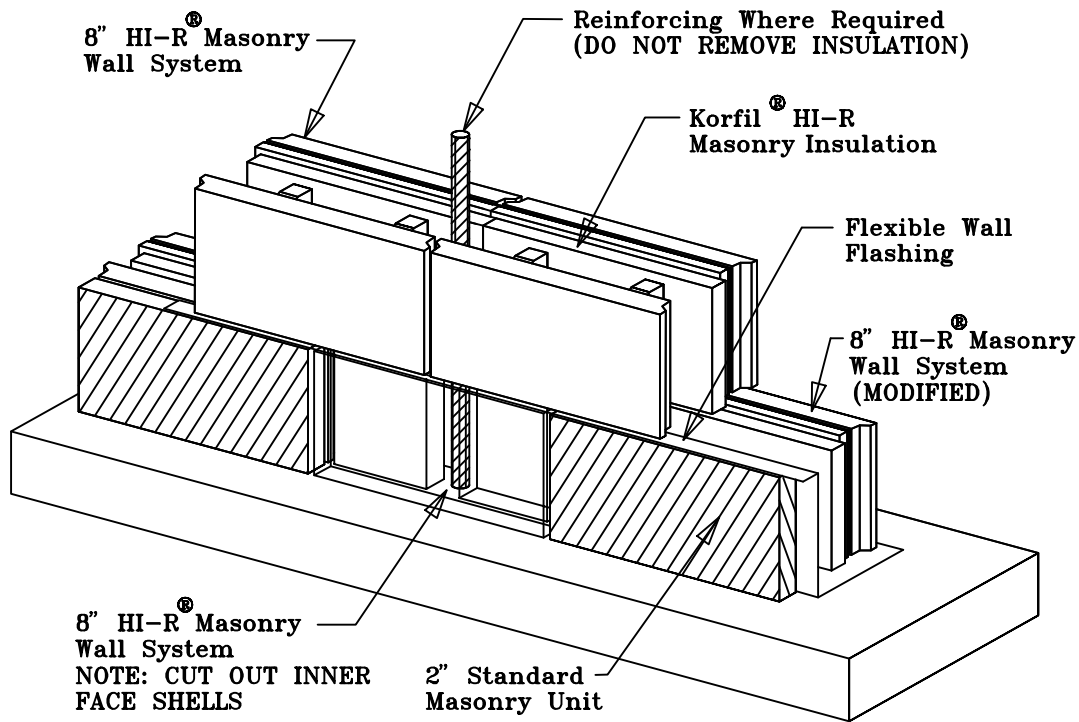
**NOTICE:** This Detail is for the Discretionary Use of the Architect. CBIS Assumes No Responsibility For Any Misuse Or Misrepresentation of the Product Or This Detail.

Concrete Block Insulating Systems  
 P.O. Box 1000  
 Freight House Road  
 West Brookfield, MA 01585  
 www.cbisinc.com



# HI-R<sup>®</sup> WALL SYSTEM

## 8" THRU WALL BASE DETAIL



DETAILS

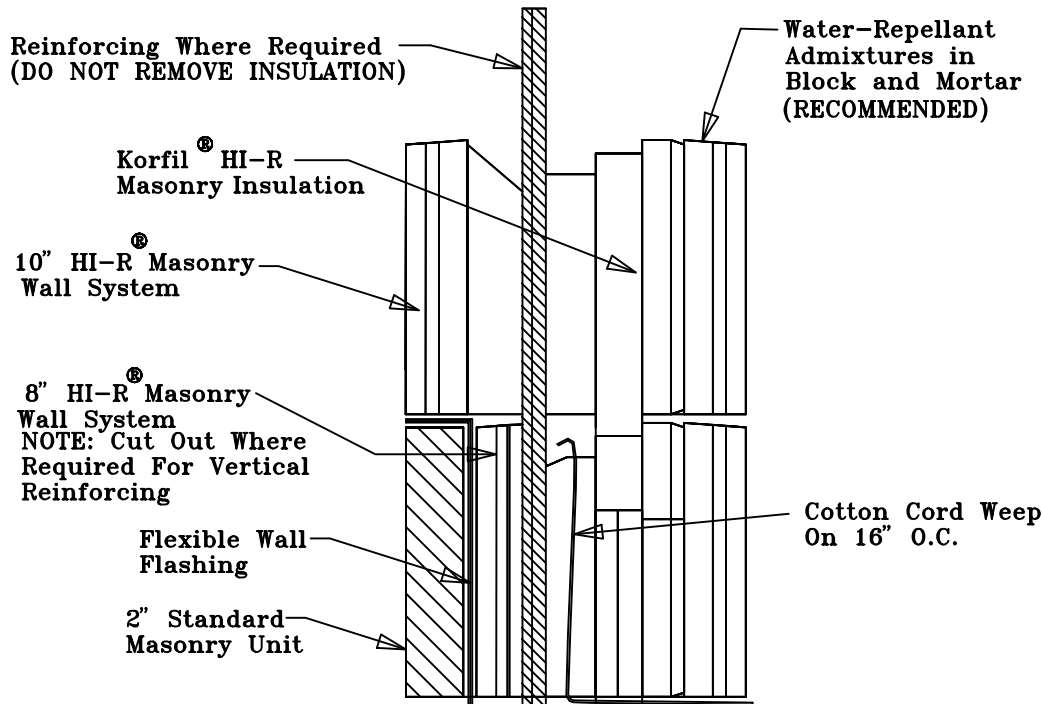
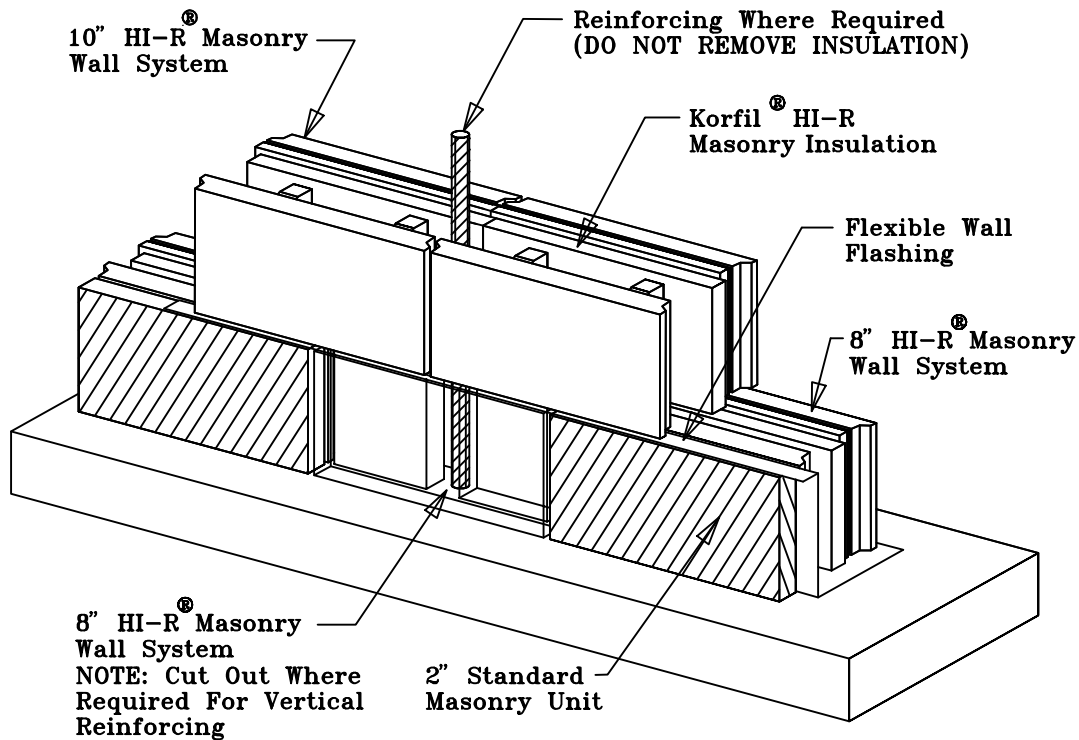
10/1/98 HI-R 7



**NOTICE:** This Detail is for the Discretionary Use of the Architect. CBIS Assumes No Responsibility For Any Misuse Or Misrepresentation of the Product Or This Detail.

Concrete Block Insulating Systems  
P.O. Box 1000  
Freight House Road  
West Brookfield, MA 01585

# HI-R<sup>®</sup> WALL SYSTEM 10" THRU WALL BASE DETAIL



DETAILS

6/1/01 HI-R 8

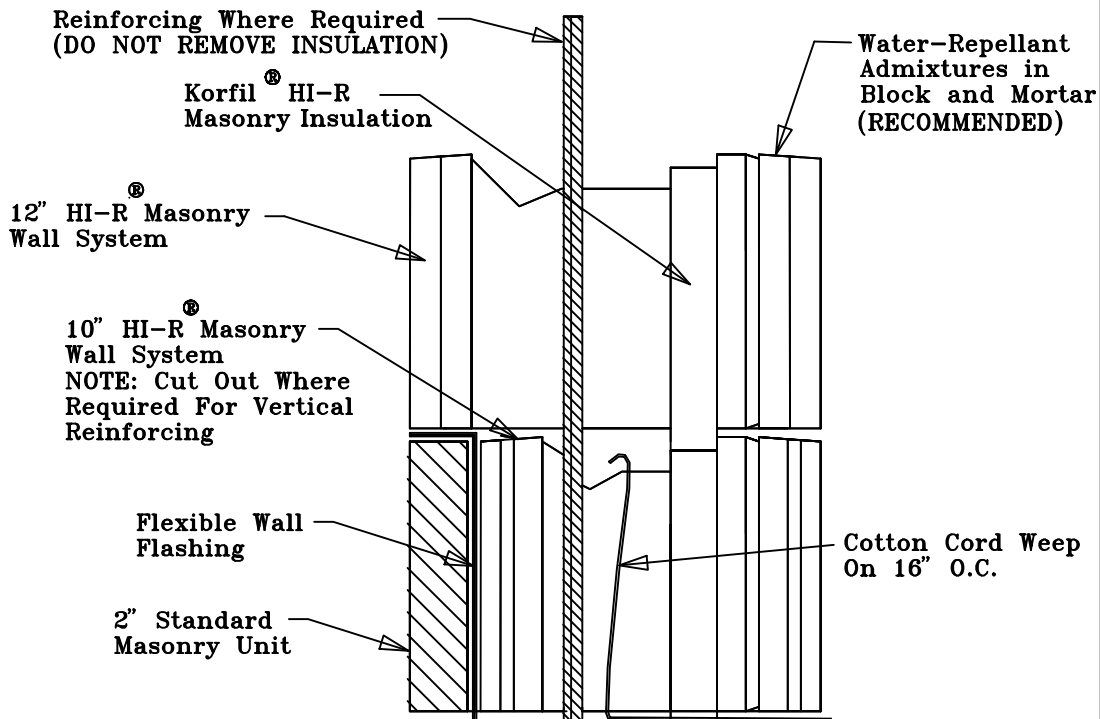
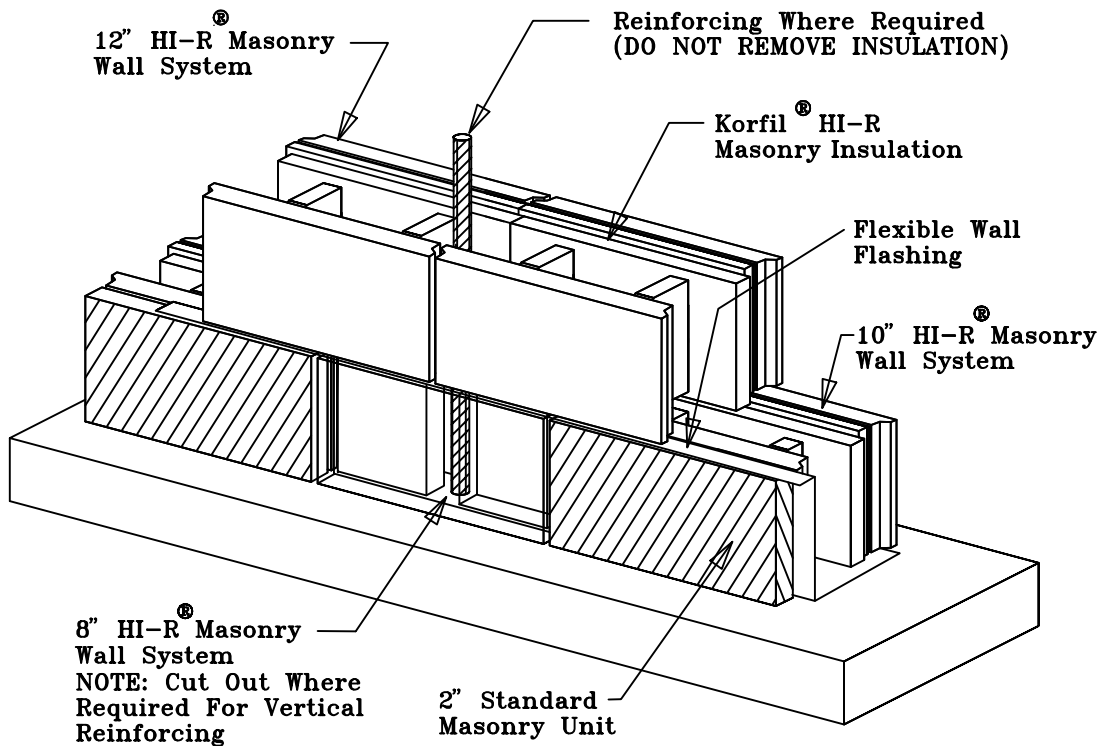
**NOTICE:** This Detail is for the Discretionary Use of the Architect. CBIS Assumes No Responsibility For Any Misuse Or Misrepresentation of the Product Or This Detail.

Concrete Block Insulating Systems  
P.O. Box 1000  
Freight House Road  
West Brookfield, MA 01585  
www.cbisinc.com



# HI-R<sup>®</sup> WALL SYSTEM

## 12" THRU WALL BASE DETAIL



DETAILS

6/1/01 HI-R 9

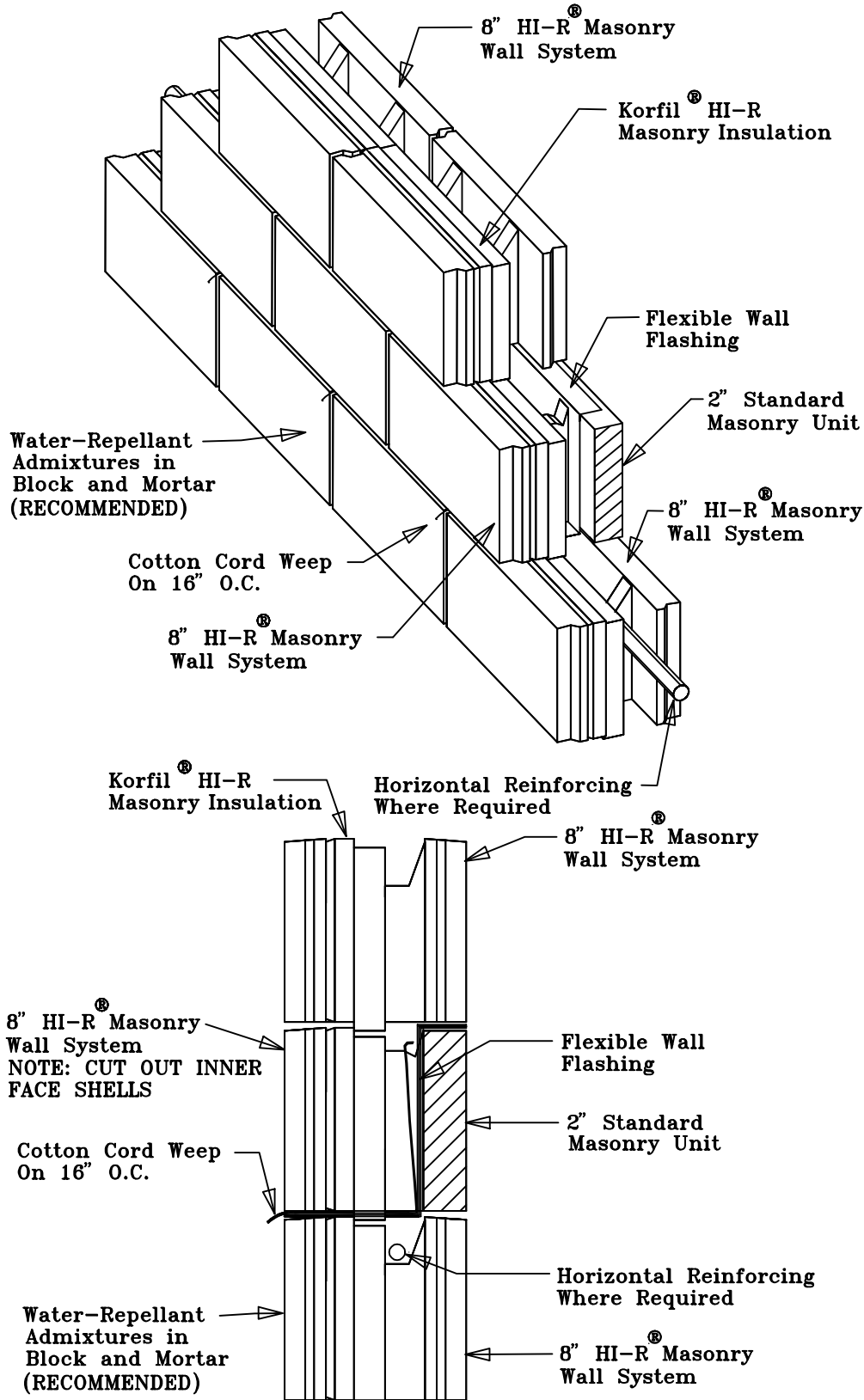


**NOTICE:** This Detail is for the Discretionary Use of the Architect. CBIS Assumes No Responsibility For Any Misuse Or Misrepresentation of the Product Or This Detail.

Concrete Block Insulating Systems  
 P.O. Box 1000  
 Freight House Road  
 West Brookfield, MA 01585  
 www.cbisinc.com

# HI-R<sup>®</sup> WALL SYSTEM

## 8" Window Head Thru Flashing



DETAILS

6/1/01 HI-R 10

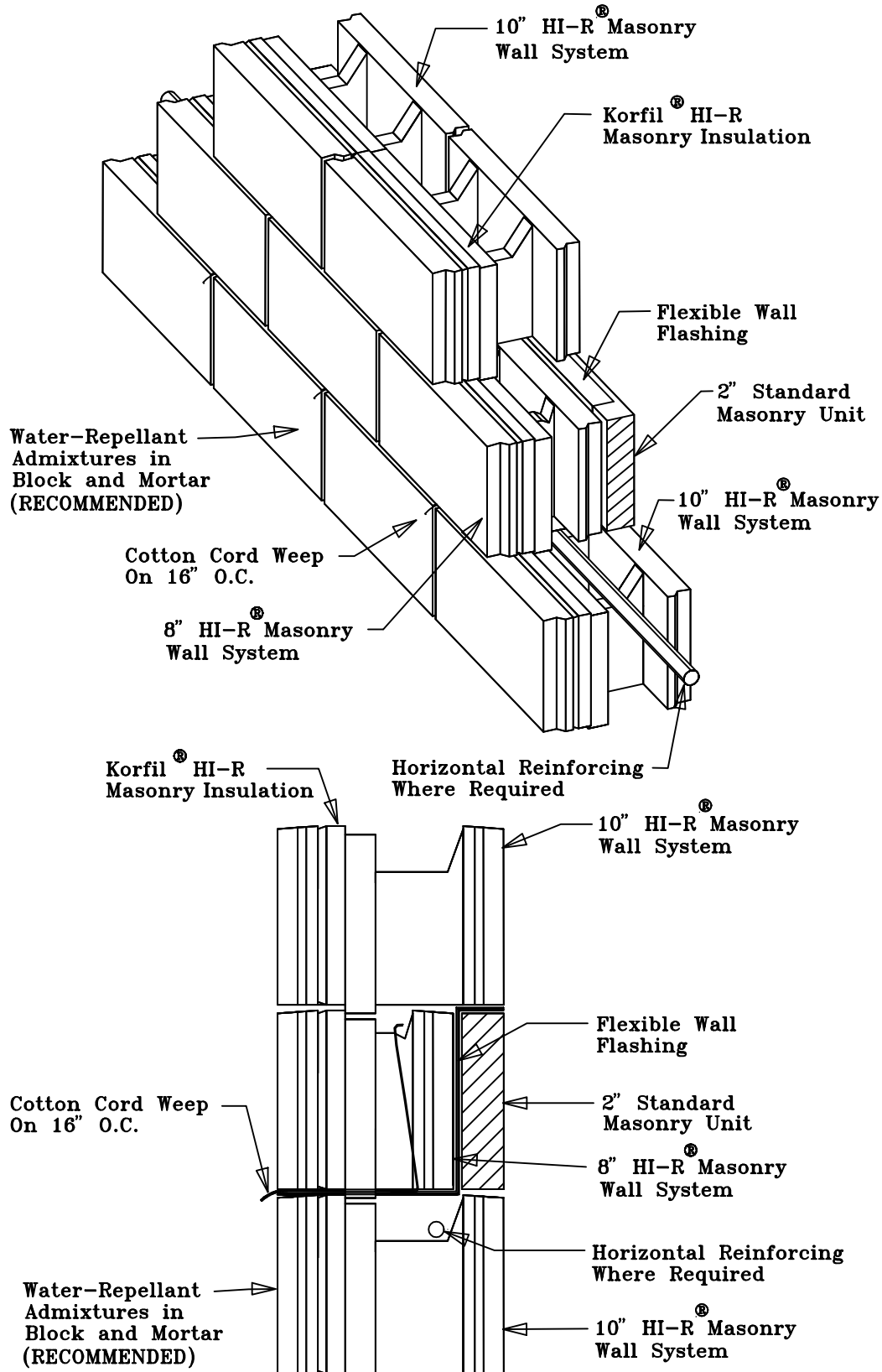


**NOTICE:** This Detail is for the Discretionary Use of the Architect. CBIS Assumes No Responsibility For Any Misuse Or Misrepresentation of the Product Or This Detail.

Concrete Block Insulating Systems  
P.O. Box 1000  
Freight House Road  
West Brookfield, MA 01585  
www.cbisinc.com

# HI-R<sup>®</sup> WALL SYSTEM

## 10" Window Head Thru Flashing



DETAILS

6/1/01 HI-R 11

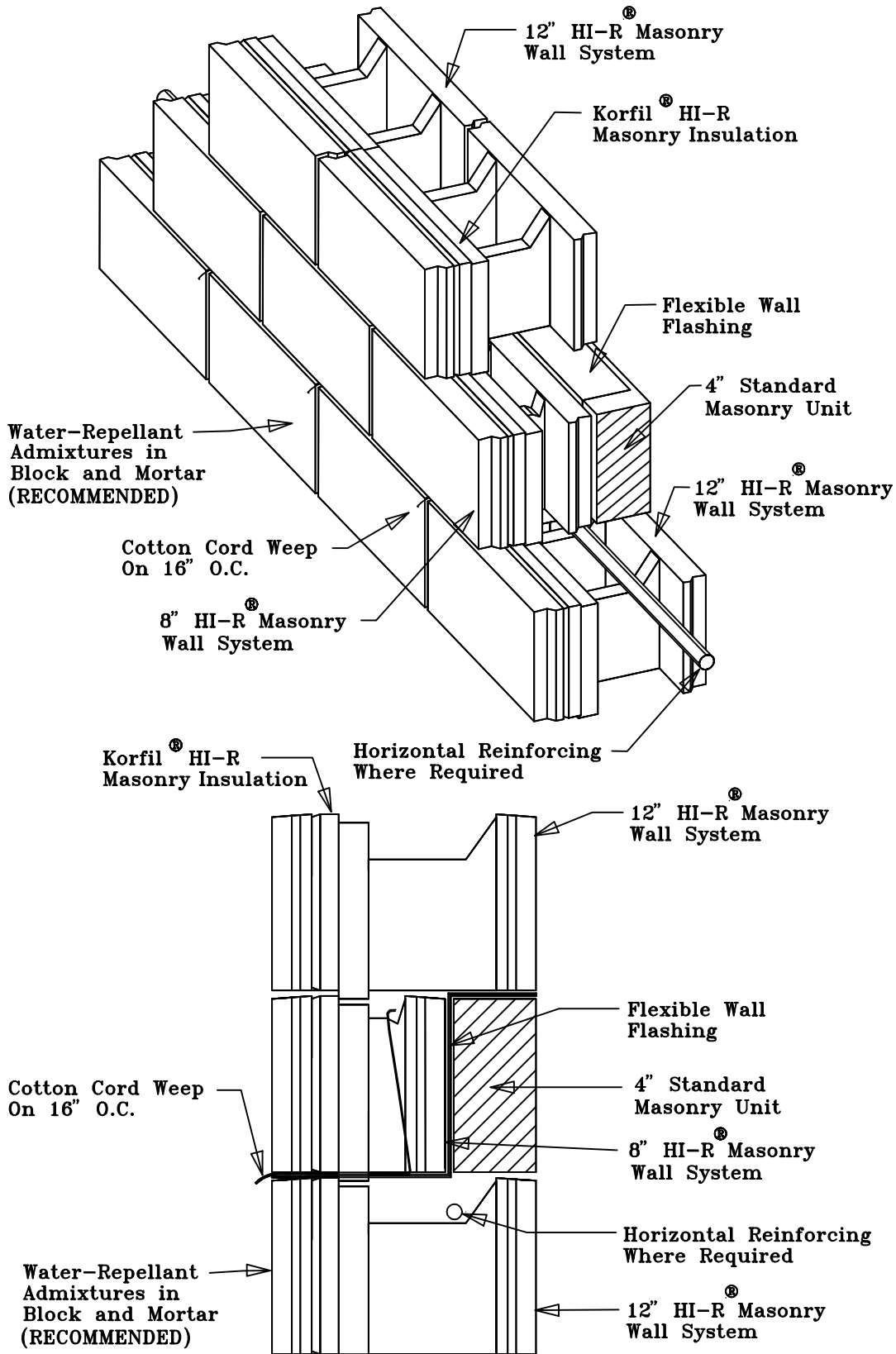


**NOTICE:** This Detail is for the Discretionary Use of the Architect. CBIS Assumes No Responsibility For Any Misuse Or Misrepresentation of the Product Or This Detail.

Concrete Block Insulating Systems  
 P.O. Box 1000  
 Freight House Road  
 West Brookfield, MA 01585  
 www.cbisinc.com

# HI-R<sup>®</sup> WALL SYSTEM

## 12" WINDOW HEAD THRU FLASHING



DETAILS

6/1/01 | HI-R 12

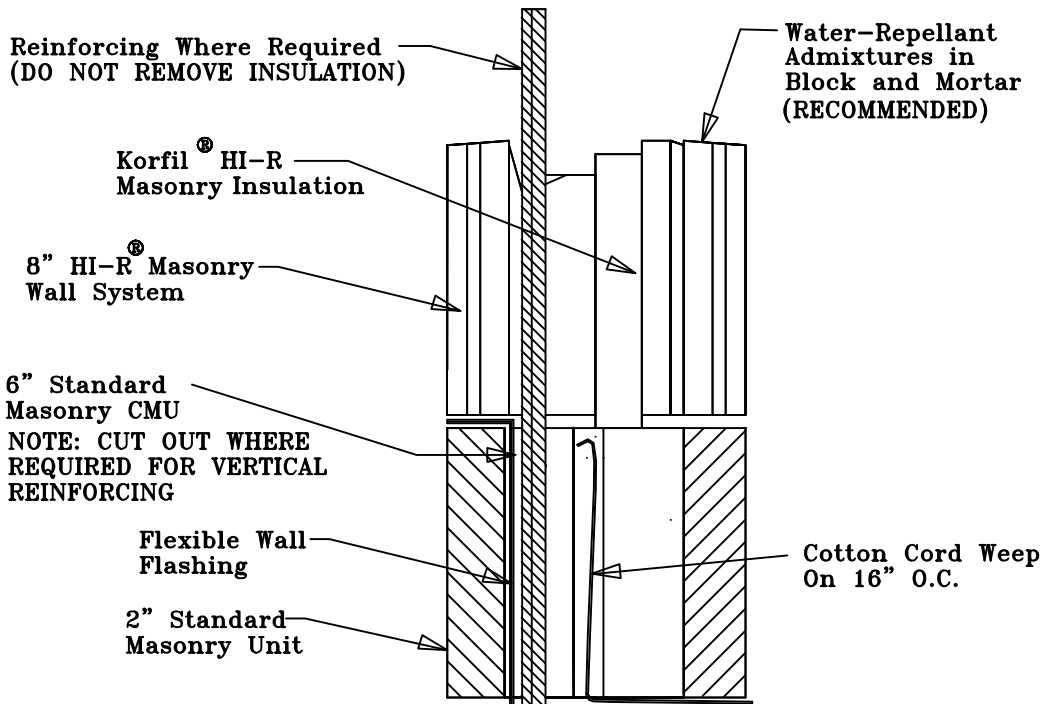
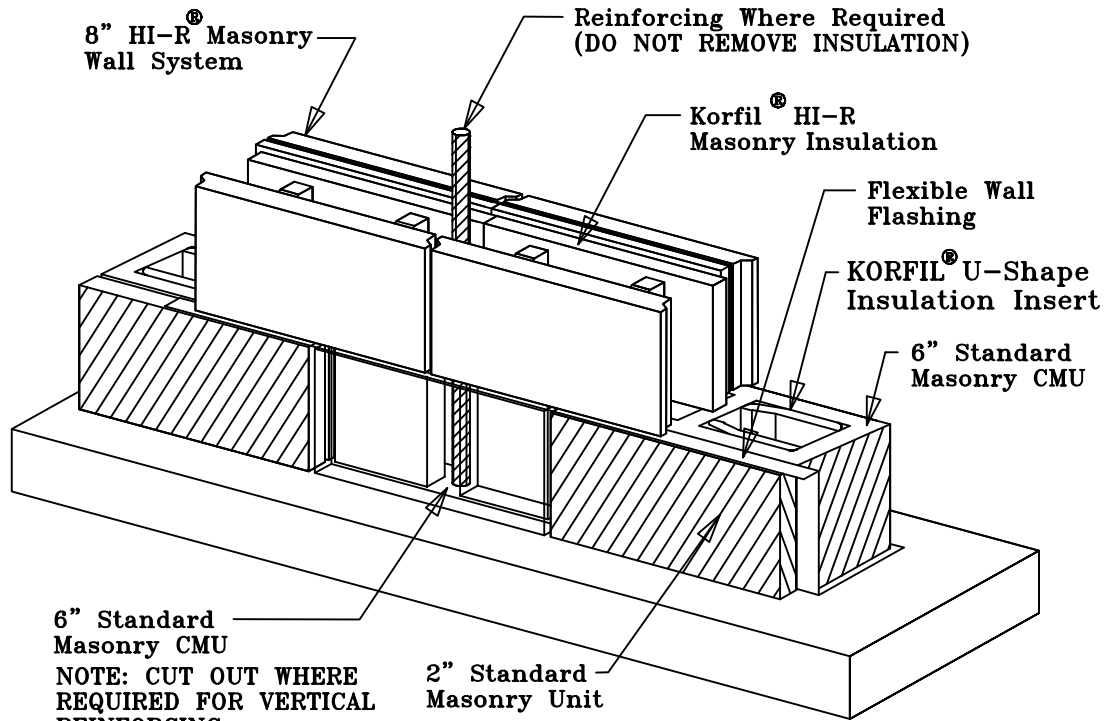


**NOTICE:** This Detail is for the Discretionary Use of the Architect. CBIS Assumes No Responsibility For Any Misuse Or Misrepresentation of the Product Or This Detail.

Concrete Block Insulating Systems  
 P.O. Box 1000  
 Freight House Road  
 West Brookfield, MA 01585  
 www.cbisinc.com

# HI-R<sup>®</sup> WALL SYSTEM

## 8" THRU WALL BASE DETAIL (ALT)



DETAILS

1/22/10 HI-R 14

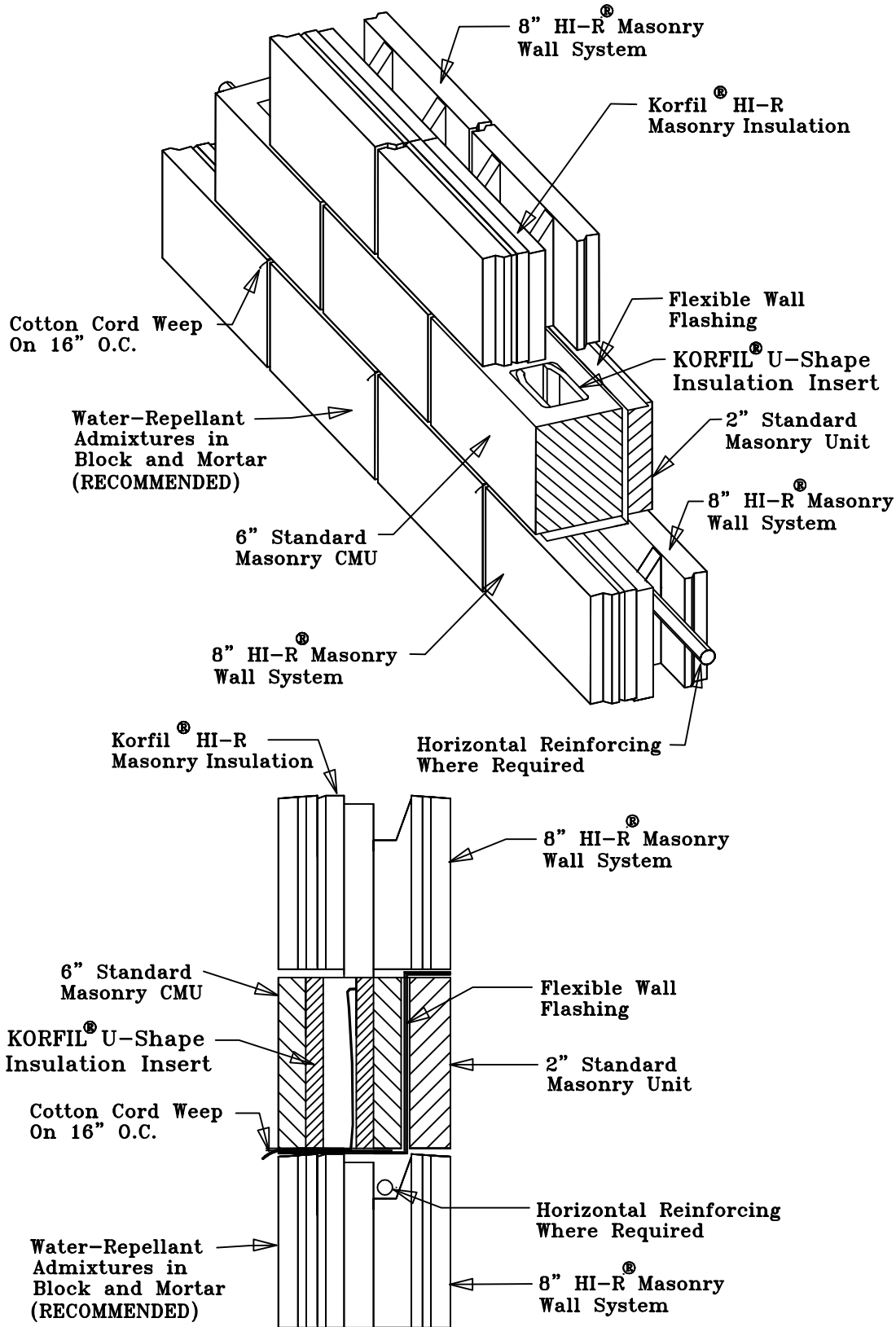
**NOTICE:** This Detail is for the Discretionary Use of the Architect. CBIS Assumes No Responsibility For Any Misuse Or Misrepresentation of the Product Or This Detail.

Concrete Block Insulating Systems  
 P.O. Box 1000  
 Freight House Road  
 West Brookfield, MA 01585  
 www.cbisinc.com



# HI-R<sup>®</sup> WALL SYSTEM

## 8" Window Head Thru Flashing (ALT)



DETAILS

1/22/10 HI-R 15

**NOTICE:** This Detail is for the Discretionary Use of the Architect. CBIS Assumes No Responsibility For Any Misuse Or Misrepresentation of the Product Or This Detail.

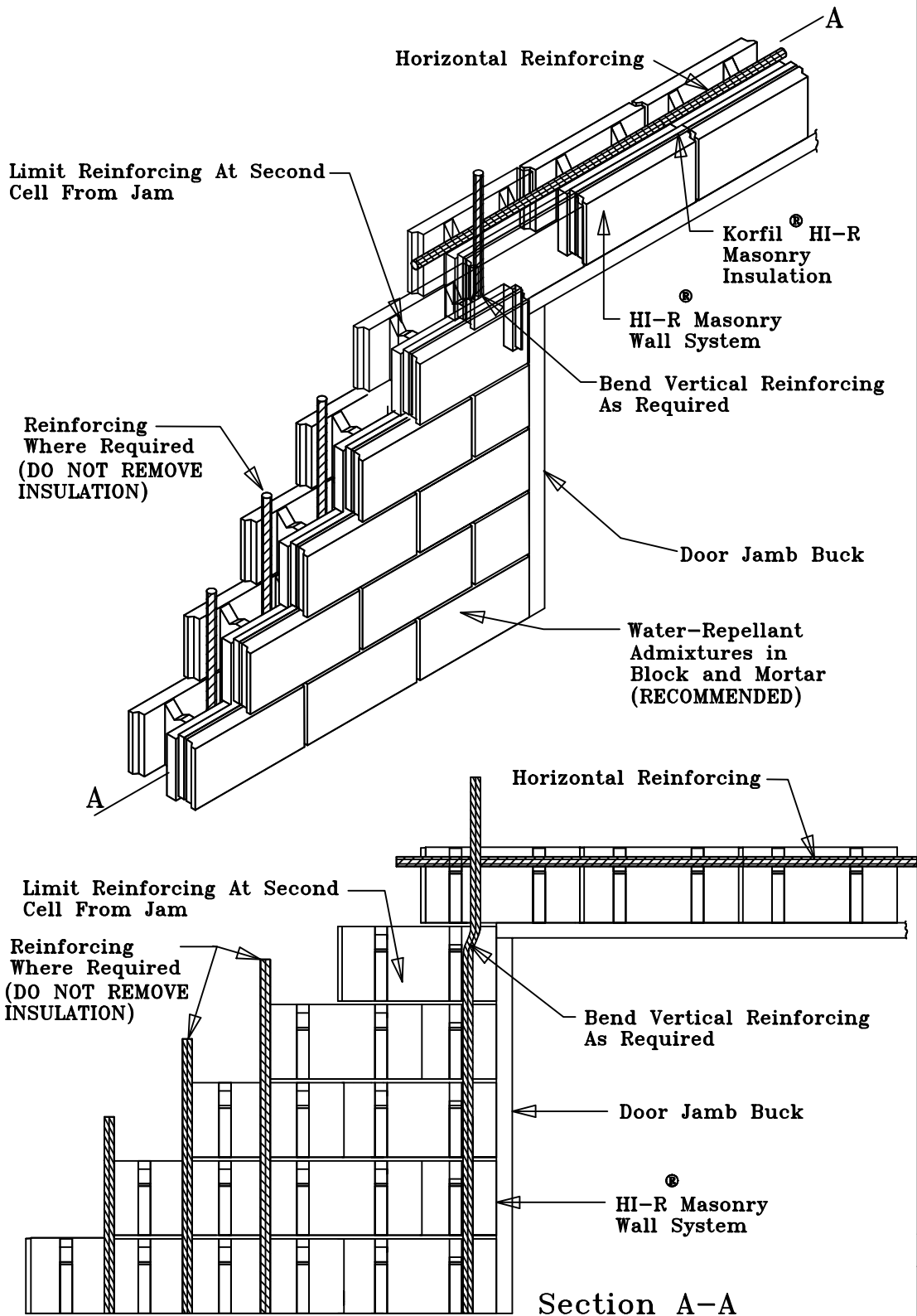
Concrete Block Insulating Systems  
 P.O. Box 1000  
 Freight House Road  
 West Brookfield, MA 01585  
 www.cbisinc.com



# HI-R<sup>®</sup> WALL SYSTEM

## 8", 10" & 12" Optional Door Jam Detail

DETAILS



9/23/04 HI-R 16

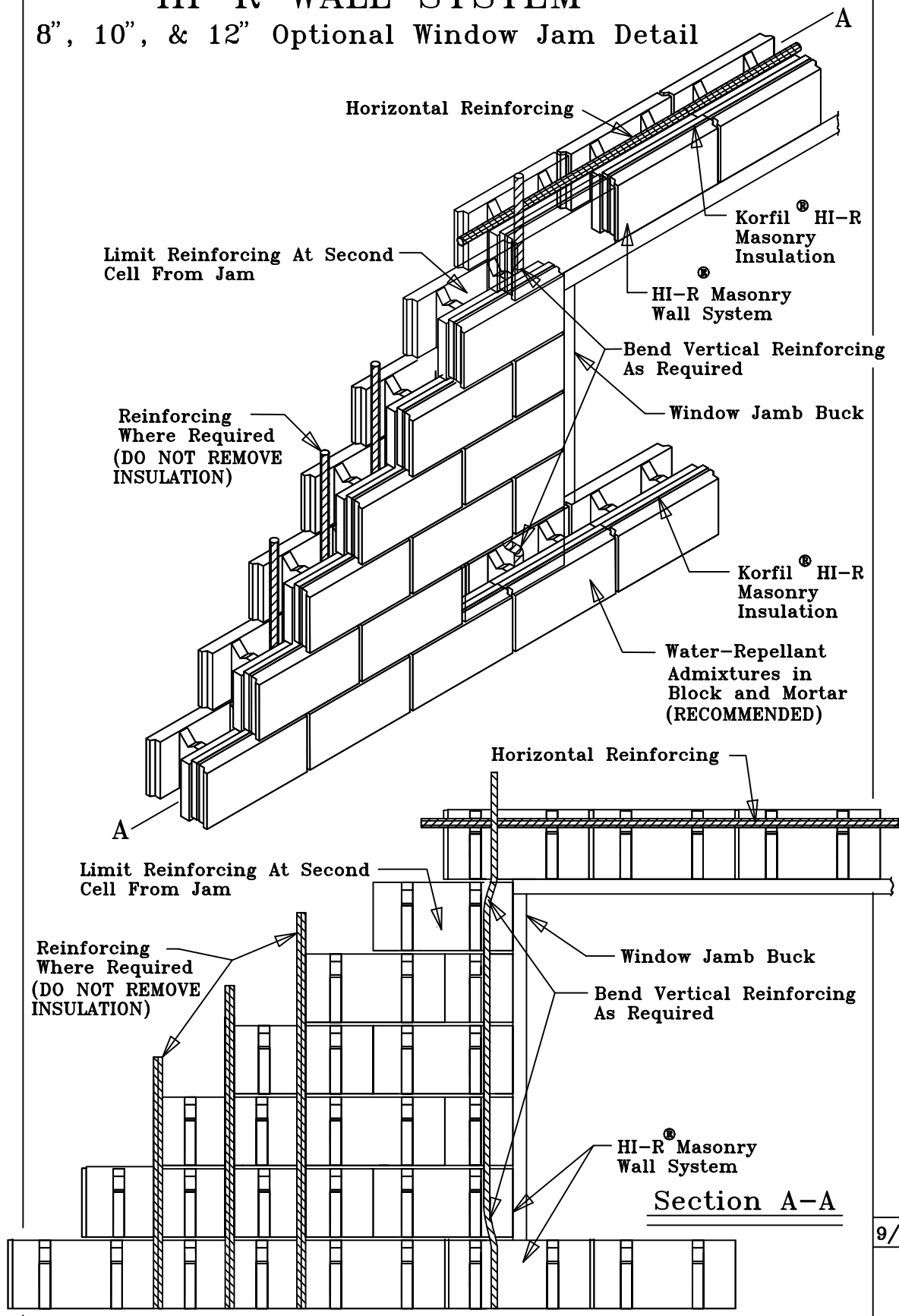


**NOTICE:** This Detail is for the Discretionary Use of the Architect. CBIS Assumes No Responsibility For Any Misuse Or Misrepresentation of the Product Or This Detail.

Concrete Block Insulating Systems  
 P.O. Box 1000  
 Freight House Road  
 West Brookfield, MA 01585  
 www.cbisinc.com

# HI-R<sup>®</sup> WALL SYSTEM

8", 10", & 12" Optional Window Jam Detail



DETAILS

9/23/04 HI-R 17

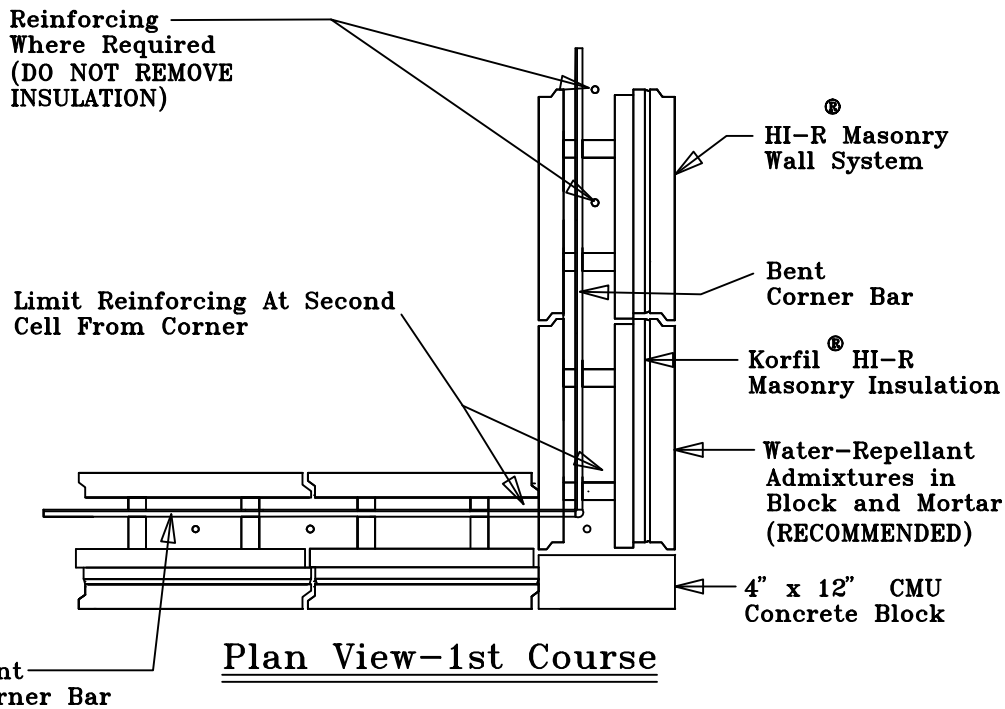
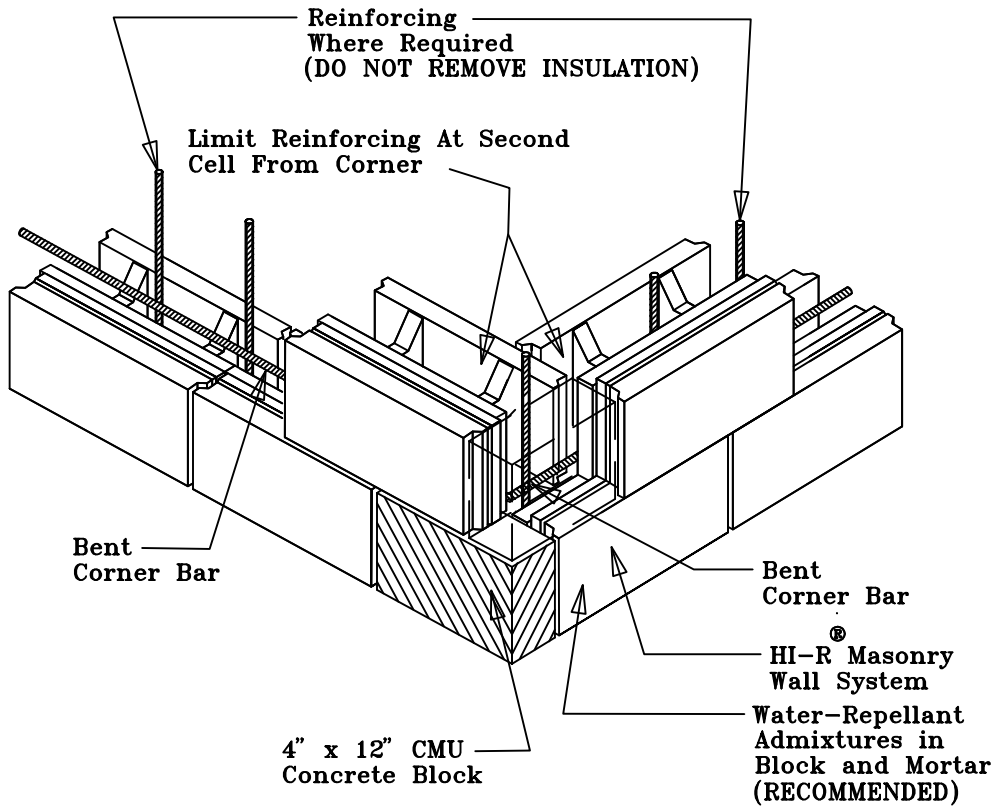
**NOTICE:** This Detail is for the Discretionary Use of the Architect. CBIS Assumes No Responsibility For Any Misuse Or Misrepresentation of the Product Or This Detail.

Concrete Block Insulating Systems  
 P.O. Box 1000  
 Freight House Road  
 West Brookfield, MA 01585  
 www.cbisinc.com



# HI-R<sup>®</sup> WALL SYSTEM

## 12" Alternate Corner Detail



DETAILS

1/12/06 HI-R 18

**NOTICE:** This Detail is for the Discretionary Use of the Architect. CBIS Assumes No Responsibility For Any Misuse Or Misrepresentation of the Product Or This Detail.

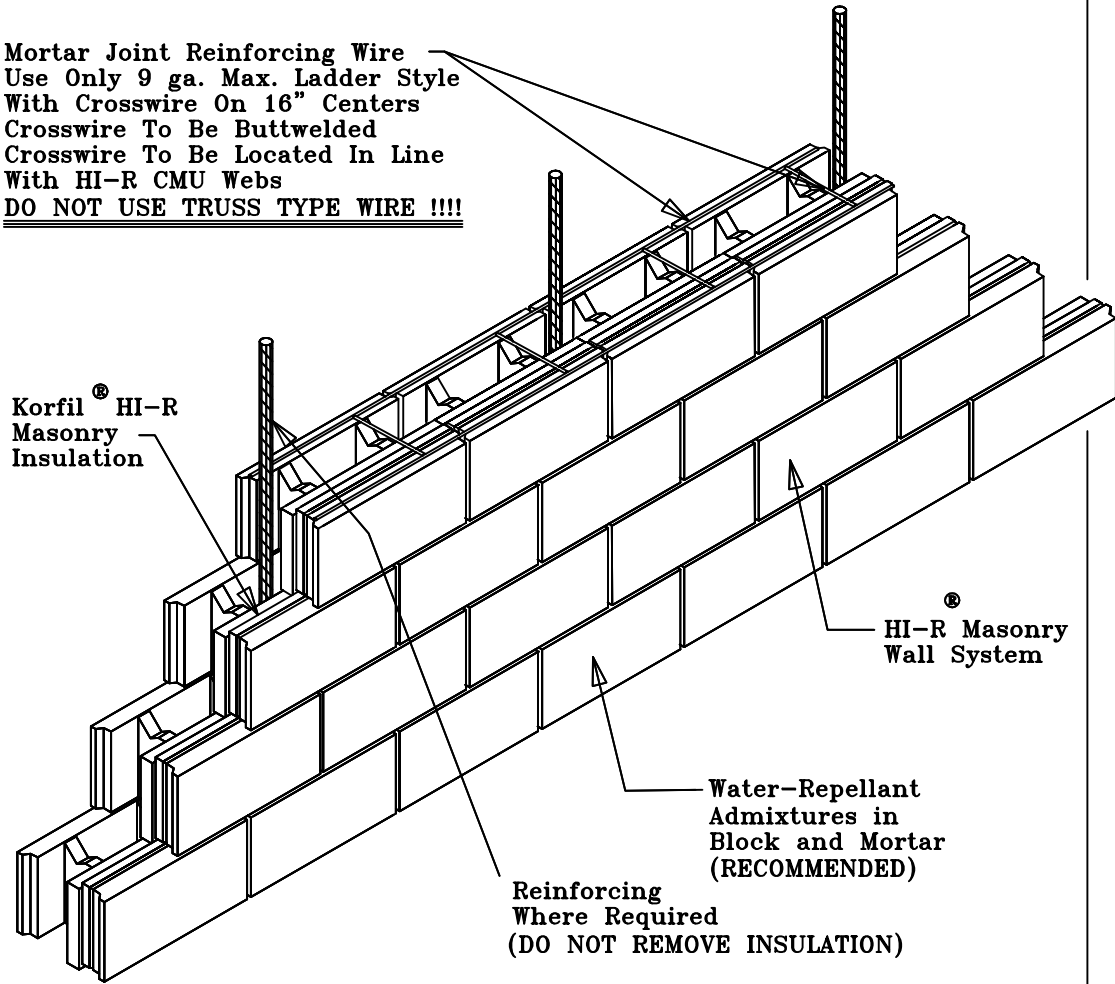
Concrete Block Insulating Systems  
 P.O. Box 1000  
 Freight House Road  
 West Brookfield, MA 01585  
 www.cbisinc.com



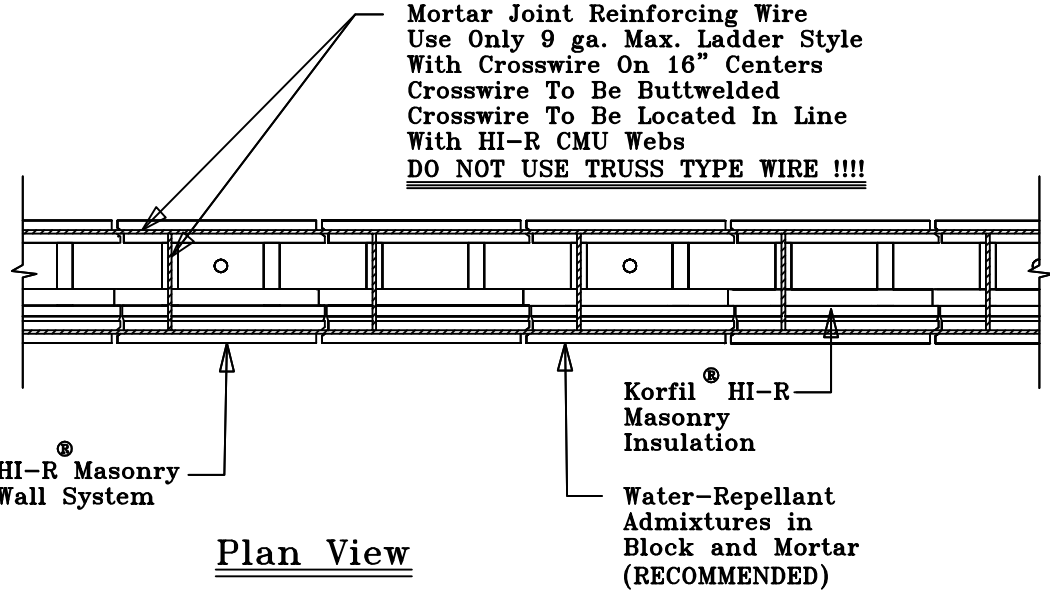
# HI-R<sup>®</sup> WALL SYSTEM

## 8", 10" & 12" Wire Reinforced Mortar Joint Detail

Mortar Joint Reinforcing Wire  
 Use Only 9 ga. Max. Ladder Style  
 With Crosswire On 16" Centers  
 Crosswire To Be Butt welded  
 Crosswire To Be Located In Line  
 With HI-R CMU Webs  
DO NOT USE TRUSS TYPE WIRE !!!!



Mortar Joint Reinforcing Wire  
 Use Only 9 ga. Max. Ladder Style  
 With Crosswire On 16" Centers  
 Crosswire To Be Butt welded  
 Crosswire To Be Located In Line  
 With HI-R CMU Webs  
DO NOT USE TRUSS TYPE WIRE !!!!



DETAILS

1/2/10 HI-R 19

**NOTICE:** This Detail is for the Discretionary Use of the Architect. CBIS Assumes No Responsibility For Any Misuse Or Misrepresentation of the Product Or This Detail.

Concrete Block Insulating Systems  
 P.O. Box 1000  
 Freight House Road  
 West Brookfield, MA 01585  
 www.cbisinc.com

